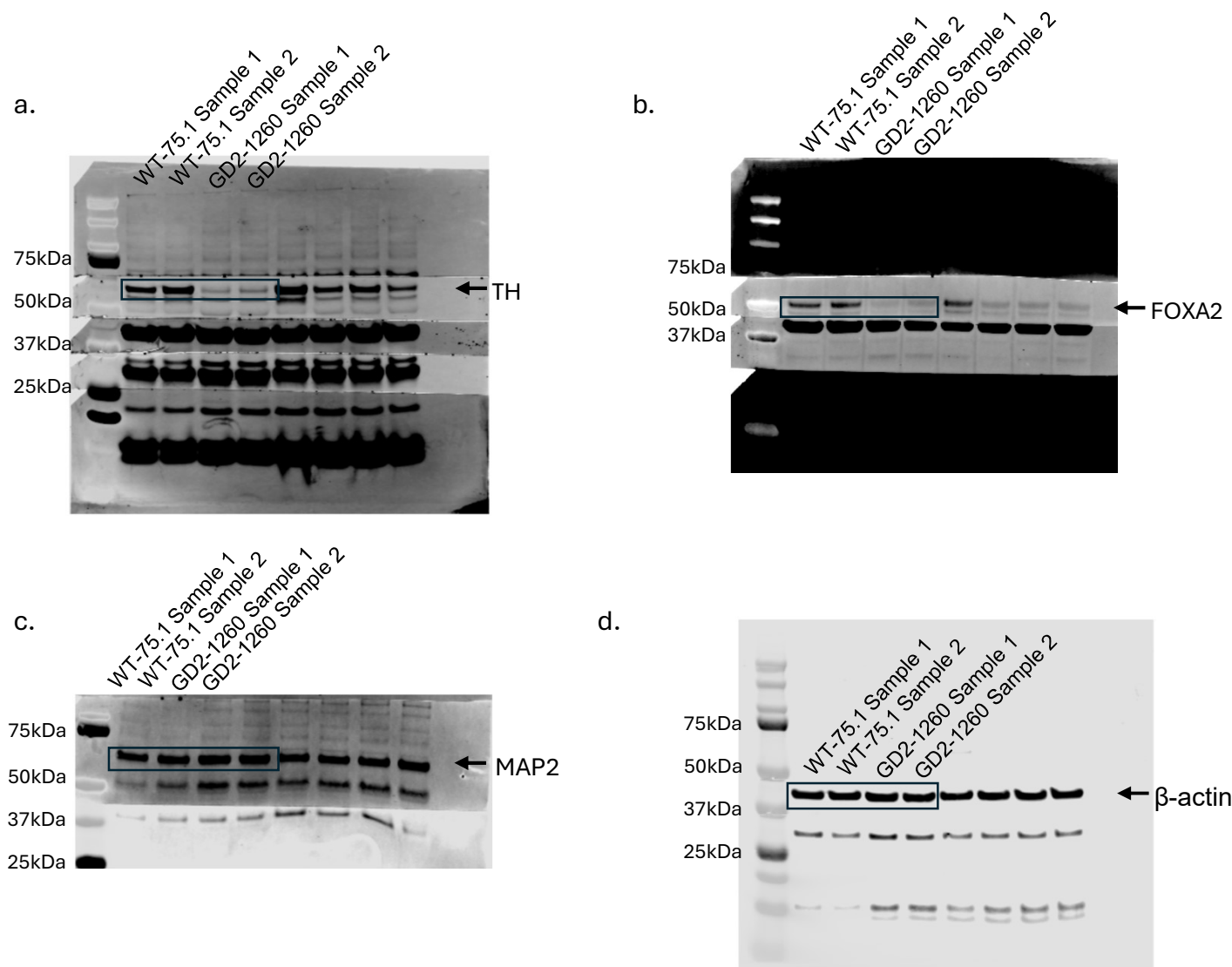


## Figure 3-source data 2

### Figure 3G



#### Figure 3-Source Data 2. Original membranes corresponding to Figure 3, panel G.

Panel a: Original blots for TH. First four lanes are WT-75.1 and GD2-1260 samples with 2 biological replicates for each.

Panel b: Original blots for FOXA2. First four lanes are WT-75.1 and GD2-1260 samples with 2 biological replicates for each.

Panel c: Original blots for MAP2. First four lanes are WT-75.1 and GD2-1260 samples with 2 biological replicates for each.

Panel d: Original blots for  $\beta$ -actin. First four lanes are WT-75.1 and GD2-1260 samples with 2 biological replicates for each.

Precision Plus Protein Dual Color Standards were used. Lanes 6, 7, 8 and 9, along with other bands on membranes corresponding to other tested targets are not shown in Figure 3G.